



GUILFORD
FOUNDATION



Impact Report 2021

Thank you
for always being there for
your neighbors during a
year like no other



Live here. Give here.

Summer 2021

Dear Treasured Friend,

Here's what we learned about you during the time of the pandemic.

When your neighbors need you, your generosity knows absolutely no bounds.

We've always known that you, our Guilford supporters, are generous, caring, and compassionate. And that you love our Guilford community.

Your gifts to The Guilford Foundation have long aided people and businesses across a wide spectrum of projects and problems — everything from supporting the Guilford Garden Club to helping families afford their rent during times of crisis.

But this last year, the needs were breathtakingly urgent and vast — and they affected every one of us. People struggled to survive — unable to afford groceries, paralyzed by grief and isolation, and without the means to get the medical care they needed.

We put out the call for help, not knowing whether any of you — in the midst of coping with the pandemic — would be able to respond.

And then ... well, there's only one way to put it. You blew us away with your outpouring of generosity!

You went above and beyond during this overwhelming emergency. And your donations literally made the difference for many of your Guilford neighbors between getting through this terrible time — and falling through the cracks.

We can't begin to describe the pride and gratitude we feel for you, our compassionate Guilford neighbors. We hope the stories that follow in this booklet give you a sense of just how profound your impact has been on the Guilford community during the last year.

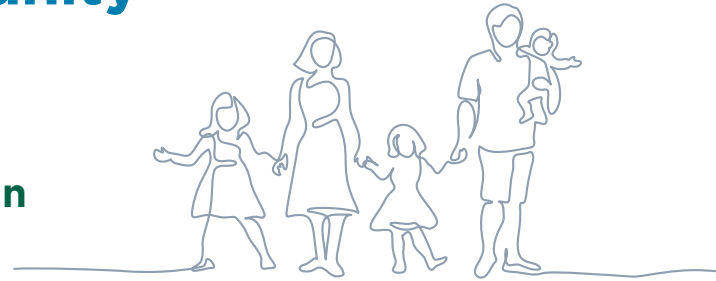
Gratefully,

Liza Janssen Petra,
Executive Director

Peter Barrett,
Board Chair

Clifford Beers builds stronger families — and that gives us all a stronger community

Thank you for investing in Guilford's future



“IT WAS A ROLLER COASTER FOR FAMILIES when the pandemic first hit,” recalls Danielle DiLauro, clinician and counselor at the Guilford office of Clifford Beers. “Once people realized it wasn’t just a short vacation at home, there was a huge increase of anxiety. Managing school and work at home, the isolation ... it was really tough and people needed help.”

Clifford Beers, the nationally known outpatient mental health clinic based in New Haven, has been providing state-of-the-art mental health and wellness services to clients struggling with mental health issues including trauma, depression, anxiety, and acute crises for over 100 years.

The lock-down and shelter-in-place rules could have paralyzed the organization, whose staff typically works with clients and their families in person.

Thank goodness for your generosity! It funded a grant to Clifford Beers that helped make sure every client and family could receive the help they needed.

“The behavioral health services we offer were essential for helping children and families cope with the challenges brought on by the pandemic,” says CEO Alice Forrester. The staff leaped into action when COVID-19 hit, she adds, and “we were able to move from face-to-face to telemedicine within 72 hours.”

Guilford residents struggle, too — just like people everywhere

Some might think Guilford residents have little need for the kinds of services that Clifford Beers offers, but they couldn’t be more wrong.

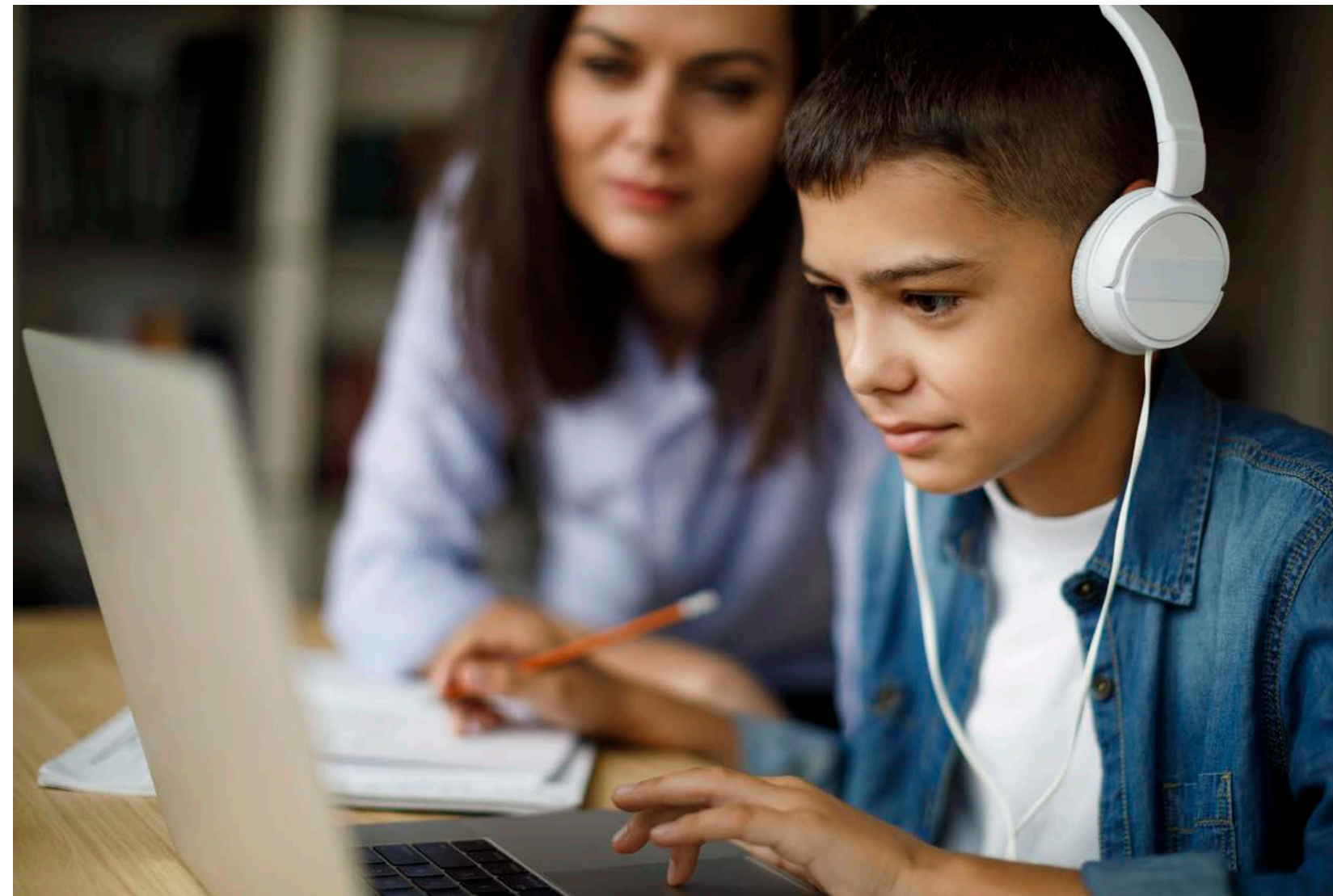
Depression, anxiety, school refusal, economic stress, housing issues, domestic violence — there were all here on the shoreline before COVID-19 hit. “Yes, some are affluent, but there’s a full range of economic status and mental health issues on the shoreline. And there’s more of a stigma here, just asking for help,” says Danielle.

The pandemic only ratcheted up the stress levels.

Kids with depression or anxiety lost their access to the social, educational, and extracurricular activities that were so critical to keeping them afloat.

Parents faced challenges they never could have imagined. “Their stress level went through the roof,” says Danielle. “Parents were juggling everything — not only parenting and working, but also supervising remote school — and doing everything with no break. If there was tension between a child and parent before the pandemic, now it was ten times worse.”

But with Clifford Beers there to help, dozens of Guilford children and their parents are getting through some of the toughest times of their lives.



Because of you, baby steps turn into giant steps

Take nine-year-old Lucas, for example.

“Even before the pandemic,” says Danielle, “he was explosive in the classroom. He’d run out of the room or even out of the school building. He lacked the confidence and the desire to read, which made things even harder.”

Once the pandemic hit, he was expected to log in, stay focused, and manage his school work with the help of his mother — a single parent. It was too much.

Danielle worked remotely with Lucas, his mom, and the school. Despite the challenges of online counseling, they made incredible progress.

“One day last spring, he asked if he could read to me from his favorite robot book,” says Danielle. “This is a kid who, before the pandemic, acted like he couldn’t read at all. He was so proud! It might

seem small, but for him it was such a big accomplishment because he had struggled for so long.”

Next year, with newly found self-assurance, Lucas is heading to Baldwin Middle School. Danielle and all the resources of Clifford Beers will be by his side to make sure he has all the support he needs to be successful.

Your gift to The Guilford Foundation, which helped Clifford Beers provide urgently needed mental health care to more than 65 children during the pandemic, is a wonderful and a wise investment in the future.

“As a therapist, I believe these issues are generational,” says Danielle. “Helping even one child like Lucas, and the people around him, is the way to prevent passing on the painful stuff and to encourage passing on the positive stuff. This is how we help grow an entire family in a better direction.” ♥

How do Guilford's ABC scholars afford to go to college?



Donors like you make the impossible possible

IF YOU LIVE IN OR AROUND GUILFORD, chances are you know Guilford ABC (A Better Chance) as a life-changing program for gifted young women of color from under-resourced communities.

ABC provides a college-preparatory education at Guilford High School, support services like tutors from Yale and top-notch college advisors, summer study abroad and educational enrichment programs, and a home at the beautiful ABC House.

It's an incredible opportunity for academically talented young women who would not otherwise have access to the kind of high school experiences most colleges expect these days.

But did you ever wonder how they manage, once they graduate and leave Guilford and the ABC program? After all that hard work, preparing for demanding college careers that will start them

on a path to successful lives, how on earth can these girls afford the tuition?

That's a question Connie Dickinson, longtime ABC board member, began to ask herself a few years ago. She was helping one of the graduating seniors sort out her college acceptances and financial aid packages.

"Where was the money going to come from?" she remembers wondering. "How much was the school offering, and how much was coming from other sources?"

An even better chance for ABC kids

That's when she realized how big the gap is for these kids. Even though ABC students typically receive financial aid and other scholarships, the cost of tuition and living expenses is often out of reach. Worse, many of the scholarships only last

"ABC doesn't just leave us out in the world after the high school program. This scholarship shows they believe in us. They trust us to succeed in college."

JULIA ANTWI-BOASIAKO

a single year, making the gap even larger in subsequent years.

Too often, ABC alums found they had to take two or three jobs to try to make ends meet—all while attending college full time.

"I thought that was awful," says Connie. "It leaves you no room to do the things you're supposed to do in college — exploring new ideas and making friendships."

Connie decided that ABC could help, so she came to The Guilford Foundation, and asked us to set up the ABC College Education Fund. Its purpose? To give a modest scholarship to every graduating ABC scholar *every year for all four years of college.*

The Foundation invests and manages all donations made to the fund, and then distributes grant awards directly to each student's college or university to defray tuition expenses.

Thanks to the incredible generosity of donors like you, the first award was granted in 2019. And since then, every ABC Guilford High graduate receives scholarship money for each year of college.

This year, every ABC student attending college received a \$2,500 grant.

It may not seem like a huge amount of money when you consider the enormous cost of tuition. But Julia Antwi-Boasiako, a sophomore at New York University who graduated from Guilford High School in 2020, can attest to the important difference it's making for her and her family.

"It helped us out so much financially, especially during COVID-19 when my mom had to stop working for a while," Julia says. "And since I'll receive it every year, I'll be able to budget and work out my tuition over the four years."

Connie would dearly love to grow the ABC College Education Fund so that the size of the scholarships can increase as tuition costs surely will. She's on a mission to level the educational playing field for people of color. ♥



»»» If you believe in Connie's mission, it's easy to join her. Visit www.guilfordfoundation.org/giving/overview, and select Guilford ABC Educational Fund for your donation. Then feel great, knowing you've helped a promising, ambitious young person achieve her goals.

◀ That's Connie, second from right, with (from left) Sherry Pranzo, one of the tutors, Liza Janssen Petra, Lauren Cyrus (2021 graduate), and Marie Berry, the current ABC president, at the 2021 scholarship award event.

For Guilford, Forever

Thank you, Sue and Lou Weady



“They were not about flash,” Deb Rynn says, remembering her mother and step-father, Sue and Lou Weady. “They enjoyed life, each other, and what they were able to have — but they didn’t do anything to impress anybody.”

THE UNEXPECTED million-dollar bequest the Weadys left to The Guilford Foundation, however, is nothing if not impressive in its generosity and farsightedness.

Lou passed away in 2014, and Sue in 2017. They were known around town as the down-to-earth, hard-working, community-minded couple that owned Royal Printing Service for decades.

“Lou was always the first to pitch in and give a hand,” says Deb.

“And my mother was always helping out with some community event or helping someone through the church. They both wanted to make a positive impact.”

With this bequest, their positive impact will last forever in Guilford.

Why did Sue and Lou leave a \$1 Million to The Guilford Foundation?

The Weadys both had a lifelong love for their home town. Sue’s Guilford roots go back to the Nortons

— one of Guilford’s founding families — and Lou lived here his entire life.

They were high school sweethearts, but after graduating, Sue and Lou went their separate ways. Decades later, after starting families and raising kids, they found each other again. They married in 1989 and started a new chapter of their Guilford lives. In 1993, Sue left a demanding career as an emergency medicine nurse and hospital administrator at Lawrence Memorial Hospital to join Lou in business at Royal Printing.

They loved life in Guilford — their Royal Printing family, the Guilford Fair, theater and music in nearby New Haven, and Saint George Church where they both sang in the choir.

“Lou could be heard driving around in his car with the top down, playing music, singing,” says Deb. “They liked to be around people, to be a part of events. And they loved being good neighbors — not just to the people on their left and their right, but to the whole community.”



Lou and Susan Weady

“This legacy takes us to a different level. It will increase our competitive grant making by fully one-third. It’s a true honor that they trusted us to identify where best to put these resources to enhance the quality of life in Guilford.” LIZA JANSSEN PETRA, EXECUTIVE DIRECTOR

The Guilford Foundation: the best vehicle for the Weady’s dreams

Sue and Lou loved Guilford, and they wanted to preserve the character of the community forever, for every Guilford resident.

“They had trust and faith,” says Deb, “that The Guilford Foundation would be the best organization — with the greatest reach — to carry their support of their neighbors forward.”

In their characteristically modest and understated way, Sue and Lou Weady left our town a legacy that will have a profound impact on Guilford’s residents for generations to come.

An amazing gift — and yet, they were just regular people, who wouldn’t want anyone to make too

big a deal of it. “If my mother were here, she would just secretly smile and be proud.” ♥

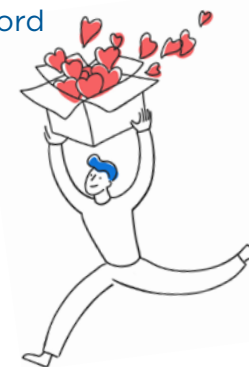
It’s easier than you think — and costs absolutely nothing during your lifetime — to leave your “forever” mark on Guilford with bequest in your will.

Liza Janssen Petra, our executive director, would love to talk you about how to get started.

Contact her at:

→ 203.640.4049

→ lpetra@guilfordfoundation.org





You made 2020 so much better (*maybe we should say less bad?!*) for so many, thanks to your amazing generosity.

THANK YOU!

YOU PROVIDED

72 families

with grants of \$500 each to pay for essentials like rent and groceries through the Women & Family Life Center



YOU HELPED

52 Guilford residents pay for virtual music programs through Neighborhood Music School that they could not have afforded without your help



YOU PROVIDED

13 residents

of Guilford with urgently needed biweekly programming for substance use disorders during the pandemic



YOU MADE SURE

8 babies

had clean diapers through Bare Necessities, the shoreline's diaper bank—1744 diapers and 3,000 baby wipes in all



YOU MADE IT POSSIBLE FOR

95 Guilford residents

to participate in the Special Olympics by purchasing helmets and softball equipment



YOU MADE IT POSSIBLE FOR

7 households

to keep their precious pets during the pandemic by providing pet care from Tail To Paw

YOU MADE SURE

9 elderly

Guilford residents stayed connected to their community with transportation to Orchard House Medical Adult Day Center



YOU GAVE

1 full scholarship

to Before and After School Care for a child in need of day care



YOU REPLACED

5 windows

at the Thomas Griswold House



2020 FINANCIAL HIGHLIGHTS



Kim Brockett (center), Tom Puffer (right), and their two mammoth donkeys gratefully accept a \$10,000 challenge grant to the Guilford Agricultural Society — presented by Liza (left). (All masked for safety, of course!)

Despite the challenging environment of the past year, the Guilford community and your Foundation rose to the occasion with unprecedented support to both The Guilford Foundation (TGF) and for TGF’s COVID-19 relief efforts.

YOUR SUPPORT WAS CRITICAL in a time of unexpected need and a vivid demonstration of TGF’s ability to respond to an immediate crisis while also maintaining a steady, increasing flow of funds into the community.

TGF takes the stewardship of the assets entrusted to it very seriously and is pleased to report that assets increased by nearly 50% for the most recent fiscal year to nearly \$5.4 million, a high-water mark for the Foundation’s portfolio. Contributions of \$1.6 million — also a record

— notably impacted the increase. This included the largest gift in TGF’s history – a nearly \$1 million bequest from the estate of Louis and Susan Weady.

This increase in assets helped the Foundation respond to the pandemic by distributing more than \$138,000 raised for the COVID-19 Emergency Response Fund to local organizations devoted to helping those in need. Total grants for the fiscal year ending Jan. 31, 2021 were \$271,237, up 87% from the previous year.

As of January 31	2021	2020	% Change
Total Assets	\$5,388,992	\$3,607,307	49.4%
Total Contributions	\$1,602,390	\$561,753	185.3%
Total Grants	\$271,237*	\$145,318	86.7%

*COVID-19 Fund grants represent \$138,083 of this total

Our Finance Committee works with the investment professionals at the Community Foundation for Greater New Haven (“CFGNH”) to preserve and grow our endowment. TGF’s individual funds are pooled and invested in a diversified portfolio managed by CFGNH.

Key financial Indicators are extracted from annual financial statements and exclude inter-fund gifts and grants. A copy of our Form 990 is available upon request.

2020 Leadership

BOARD OF DIRECTORS

- Peter Barrett**, *Chair*
- Linda Weber**, *Vice Chair*
- John Hyman**, *Treasurer*
- Christine Fappiano**, *Secretary*
- Sarah Bishop DellaVentura
- Ashley Fernandez
- Betsy Gribble
- Chris Hodgson
- Deirdre Jacob
- Judith Meyers
- Andrew Page
- Matthew Peterson
- Jeffrey Rice
- Alexander Sulpasso

STAFF

- Liza Janssen Petra,
Executive Director
- Jennifer Mullett,
Foundation Coordinator
- Robin Wolek, *Bookkeeper*

AMBASSADORS

- Deb Abildsoe
- Sharon Barrett
- Jeffrey Beatty
- Jonathan Bishop
- Maryann Bracken
- John Crawford
- Frank DePino
- John Dillon
- Kyle Eagleson
- Andrew Eder
- Dan Fisher
- Charles Frey
- Timothy Geelan
- John D. Gillespie
- Norma S. Ginz
- Joe Goldberg
- Robert Hartmann

- William “Bo” Huhn
- Allen Jacobs
- Roger Joyce
- Annie Garcia Kaplan
- Mary Jo Kestner
- Kate Lee
- Lawrence Leete
- Delaney Lundberg
- James Mancini
- Rick Mayer
- Robert McCool
- Michael McNiff
- Michael Mikolay
- Chris Moore
- Laura Page
- Stephen Page
- Tom Pinchbeck
- Helen Rizzo
- Sandra Ruoff
- Meghan Scanlon
- Irving Schloss
- Ralph Schoemann
- Edward Seibert
- Joan Shrewsbury
- Brendan Smith
- Pam Stoddard
- Katie Tuttle
- Jan Walzer
- Kathleen White
- Katherine Wiltshire

2020-2021

YOUTH ADVISORY GROUP

- Kiera Stankewich**, *Co-Chair*
- Hana Greif**, *Co-Chair*
- Sophia Ruser**, *Secretary*
- Janna Ellman**, *Treasurer*
- Madden Cunningham
- Sydney Cunningham
- Sadie Davidson
- Ryan Lynch



The board in 2019. Unfortunately we were unable to gather in person for a photo this year.

- Moira McGovern
- Francesca Meneo
- Gigi Meneo
- Leila Ruser

2019-2020

YOUTH ADVISORY GROUP

- Ella Stanley**, *Co Chair*
- Kiera Stankewich**, *Co Chair*
- Nick Chiu
- Madden Cunningham
- Sydney Cunningham
- Sadie Davison
- Janna Ellman
- Hana Greif
- Sequoia Kessler
- Jared Lynch
- Isabelle Paris
- Sophia Ruser





2020 Grant Awards

The Guilford Foundation (TGF) is pleased to announce that it committed \$271,237 for initiatives and organizations serving Guilford in 2020. This reflects 25 grants made through our COVID-19 Response Fund for Guilford, 15 grants through our competitive grant making process, 18 scholarship awards, 16 grants from designated funds for local organizations, and investments in TGF-driven leadership initiatives.

- \$500 Tail to Paw Animal Support** to reduce the household cost burden of medical and general care of pets.
- \$1,000 Guilford Youth and Family Services** for gift cards for teens in lieu of gifts due to COVID-19 for the annual Holiday Teen Gift Drive.
- \$1,000 Legacy Theatre** to support general operating expenses due to the loss of income during COVID-19.
- \$1,000 Neighborhood Music School** to support for the NMS Guilford Branch need-based financial aid program.
- \$1,000 Special Olympics CT** to cover the cost of purchasing/replacing equipment, covering registration fees, and pay for transportation to events.
- \$1,000 Vista Life Innovations** to support a “A Shared Stage” Production.
- \$1,000 Leadership Initiatives** to support the local organizations participating in the Great Give
- \$1,150 Special Education Parent Teacher Organization (SEPTO)** to host a series of virtual programs on subjects including resilience, the power of connection, ending bullying, and parenting tools to address stress and anxiety.
- \$2000 Bare Necessities** for diapers and wipes to families in need and adult diapers to seniors in need.
- \$2,000 Guilford Social Services** to provide gift cards in lieu of Holiday Gift Baskets during COVID-19.
- \$2,000 Guilford Center for Children** for tuition assistance for families who need it.
- \$2,000 Jordan Porco Foundation** to support the virtual adaptation of a mental health program to help Guilford’s youth cope with stress of COVID-19 epidemic.
- \$2,000 Lifelinx** to maintain their substance abuse transportation program for residents during COVID-19.
- \$2,400 St. George Transitional Housing Project** to help a family in transition by providing a full year of rental assistance.
- \$2,500 Guilford Housing Authority** to replace existing maintenance sheds.
- \$2,703 Community Dining Room** for operational support for increased demand during COVID-19.
- \$3,000 Lifelinx** for their Recovery Management Support Program to reduce relapse and encourage sustainable long-term recovery.
- \$3,000 Shoreline Arts Alliance** to support general operating expenses due to the loss of income during COVID-19.
- \$3,100 Dudley Foundation** to support general operating expenses due to the loss of income during COVID-19.
- \$4,350 Sponsorships** of local events and organizations.
- \$5,000 Clifford Beers** for trauma-informed, non reimbursable case management and care coordination services for Guilford children and families.
- \$5,000 Community Nursery School** to offset the cost of additional cleaning supplies and additional staffing costs due to COVID-19.
- \$5,000 Connecticut Hospice** to cover a portion of expenses incurred as a result of purchasing Personal Protective Equipment (PPE) to be equipped as an overflow site for area hospitals.
- \$5,000 Dan Cosgrove Animal Shelter** to support the building of a Pet Food Pantry room as part of a capital campaign for building renovation and expansion.
- \$5,000 Gift Card Incentive Program** to provide a match to the Gift Card Program to support local restaurants and businesses with a match to the Guilford Food Bank.
- \$5000 Orchard House Medical Adult Day Care Center** to support general operating expenses due to the loss of income during COVID-19.
- \$5,000 SARAH** to support the purchase of Personal Protective Equipment to allow staff and clients to interact safely.
- \$5,000 VNA Community Healthcare & Hospice** to support Guilford residents and their families when healthcare reimbursements fall short.
- \$5,280 Guilford Center for Children** for an arts program and curriculum.
- \$5,500 Shoreline Chamber of Commerce** to support general operating expenses due to the loss of income during COVID-19.
- \$6,000 Guilford Center for Children** to support general operating expenses due to the loss of income during COVID-19.
- \$8,000 Before and After School Care** to support tuition assistance for families who need it.
- \$10,000 Guilford Agricultural Society** to support general operating expenses due to the loss of income during COVID-19.
- \$10,000 Guilford Art Center** to support general operating expenses due to the loss of income during COVID-19.
- \$10,000 North Guilford Nursery School (NGNS)** to support the reopening of school after closing for nine months due to COVID-19.
- \$10,000 Youth Advisory Group (YAG)** Grants to Guilford Public Schools for Health Kits, Guilford Before and After School Care, Guilford Center for Children and Guilford Social Services.
- \$14,150 Guilford Institute Grants**, recommended by YAG, to support out-of-budget initiatives at Guilford High School.
- \$20,000 Women and Family Life Center** to support general operating expenses due to the loss of income and increased demand for services during COVID-19.
- \$8,500 Grants from Donor Advised funds** to Guilford Park & Recreation Department (soccer fields), Guilford Youth & Family Services, All the King’s Horses, and the Cove Center for Grieving Children
- \$22,230 Designated Grants** Guilford Food Bank, St. George Food Pantry, Guilford Arts Center, Guilford Interfaith Volunteers, The Guilford Foundation, Guilford Social Services, Women & Family Life Center, VNA Community Healthcare, Guilford Agricultural Society, Guilford Community Fund, Guilford Free Library, Guilford Preservation Alliance, Guilford A Better Chance Program
- \$31,450 Scholarship Grants** to 20 graduates of Guilford High School Students and 1 graduate from the Sound School
- \$45,000 Women and Family Life Center** for emergency financial support grants for Guilford citizens impacted by COVID-19.

Competitive grants are awarded to qualified nonprofit and government agencies serving the town of Guilford. For more information and the application form, go to our website: www.guilfordfoundation.org.



We extend our deepest gratitude

to the following individuals, businesses and foundations who made financial contributions
to The Guilford Foundation from February 1, 2020 to January 31, 2021.

THANK YOU

\$10,000 AND UP

Anonymous
The Eder Family Foundation
Yvette & Arthur Eder Foundation
Ann & Daniel Fisher
Guilford Interfaith Volunteers
Guilford Savings Bank
Merri & John Hyman
Robert Jaeger
Amy & David Jaffe
Connie & Roger Joyce
Kate & William Lee
Mary Stevens & Jock Akin
Stoddard Family Foundation
Lou & Sue Weady Estate

Al Jacobs
Johnson & Johnson Employee
Engagement Program
David Knapp
GHS Fencing Boosters
Mix Design Store
Network For Good
Melissa & Andrew Page
Laura, Claudia, Katharine &
Brian Page
Helen Pedersen- Keiser &
Robert Keiser
Jessica Penman
Carol & Lawrence Rizzolo
Robin Spath

\$5,000 TO \$9,999

Deborah Abildsoe & Irving Schloss
Bishop's Orchards
Connie & Peter Dickinson
Lawrence Dowler
Pamela & Jonathan Ellman
David Fisher
John Gillespie
Cindy & Joe Goldberg
Judith Hohman
Lynne Hyman & Caird Forbes-Cockell
Kit Kaufman
Delaney & Bruce Lundberg
Roslyn Meyer
Nancy & Thomas Patton
Joan & Barry Richter
Amy Stefanowski
Jan Walzer & David Etzel

\$1,000 TO \$1,999

American Legion Post 48
Barbara & Chip Angle
William Aselyte
Skipwith Banker
Karen & Terry Bergantino
Mary Best
Jane & Charles Bishop
Barbara Bishop
Debbie & Keith Bishop
Maryann & Michael Bracken
Ruth Cook
Patricia & Keith Cunningham
Helene & Michael DeCataldo
Melissa & Timothy Geelan
Stephen Goldschmidt
Victoria & Colin Gordon
Paul Hermes
Christopher Hodgson
James Ian
Kristine & Ray Iglesias
Deirdre & Robert Jacob
Tricia & Timothy Kish

\$2,000 TO \$4,999

Eva & Michael Brown
Betsy Gribble & Doug Baldwin
Gwendolyn Gunn & Norman Marshall

Wendy Kravitz
Paul Looney
Alice & J Thomas Macy
Elizabeth & James Mancini
Stephanie & Rowland Mayor
Jennifer & Michael McNiff
Patty Ann & Ed Meyer
James Meyer
Judith Meyers & Richard Hersh
Page Hardware & Appliance Company
Helen & Marco Rizzo
Bonnie & Jonathan Rothberg
Lisa & Donald Rusconi
Sandra & Parry Spahr
Ellen Tillotson & William Cavanaugh
Edina Torgyekes & Mischa Frusztajer
Town of Guilford,
Shellfish Commission
Linda & Jeffrey Weber
Kathleen White
Carol & Fred Wright

\$500 TO \$999

Carol Bailey & Laurie Desmet
Barings, LLC
Jean & Peter Barrett
Ruthann & David Beckerman
Claudia Buzzi & Pietro DeCamilli
Layna & Peter Cain
Linda Carr
Joann & Richard Carson
Anita Catardi
William Childress
Maggie Cohn
Andrea Collingwood & John Kelly
Shan & Ronald Cyr
Karen & Robert Davidson
Emily & David Davison
Christine & Anthony Fappiano

Ashley & Salvatore Fernandez
Dorothea Flink
Simone & Brian Gell
Carolyn Grave
Jane & Stephen Gresham
Caroline Herrick & Theodore Sands
Martha Howard & Neil Schultes
Noemi & Theodore Kearns
Jerry Kenney
Mary Jo Kestner & Russ Campaigne
Candace & Donald Kohn
Maria Krisch
Melissa & Steven Lamoreaux
Marie & Leighton Lee
Carol & Robert Lyons
Lauretta Lyons
Main Street America Matching
Gift Program
Brandy & Scott Markovich
Carolyn Matthes
Jane & Kevin McDonough
Cindy & Robert McNamara
Elisa & David Milano
Pam & Doug Miller
Sandy Nicholas
Louise & Rick Odermatt
Julie Paquette & Derek Steinbacher
Diane & Guido Petra
Leslie Powell
Joellen Putnam
Saint George Church
Mary Scheimann & Whit Iglehart
Larry Schwartz
Kathryn & Eric Sejourne
Joan Shrewsbury
Andrea & Mark Sklar
Meg Smith & Peter Hawes
Veronica Soell
Sandy Springer & Craig Gunderson
Elissa & Aaron Tessler
Ann Turner
Peter Visco
Anne & Kevin Waehner
Noreen & Charles Wolleben

\$250 TO \$499

Aetna Foundation
Jodi & Todd Arnold
Marie Landry & Peter Aronson
Nancy & Ronald Bailey
Linda Balestracci

Paula Baraket
Karen Bentlage
Bridget & Roger Berman
Pamela & Stephen Besse
Sarah Bishop & John Della Ventura
Kimberly Bishop & Scott VanPatten
Nancy & Jonathan Bishop
Kate & William Bloss
Ursula Brewster & Mark Gahm
Maureen & George Collins
Community Foundation for
Greater New Haven
Ellen Cordes & Harry Haskell
Catherine & John Crawford
Jen & John Cruet
TEC Landscape Design, Inc.
Judy & Richard Davies
John Dillon
Christine & Louis Drago
Kellie Duggan
Carrie & Lou Federici
B. Christopher Galvin
Caitlin Garzi
Allison & Josh Geballe
Laura & Adam Gilbert
Brian & Sue Gillie
Louise & Todd Gould
Lisa Gray & Alan Organschi
Guilford Funeral Home
Lynn & Cliff Gurnham
Elizabeth Hadley
Paul Hayslett
Cynthia Hirni & Robert Raines
Anne & Edward Huguenel
Wendy & Frank Ifkovic
Susan Kashaf & Christopher Ruser
Suzanne Kelley
Patricia & Lawrence Leete
Stephanie Lennon
Susan & Tony Leonard
Karla Lindquist & Alex Sulpasso
Marianne Lochthofen
Ed Lombard
Amy McCauley
Juliette McSweet
Merck Foundation
Michele Millham
Susan & George Morriss
Kari & Eric Mull
Peter & Bobbe Otis
Ann & Stephen Page

Laura Page & Richard Beatty
George Page
Renee Pallenberg
Whitney & Matt Peterson
Liza Janssen Petra & Noel Petra
Pfizer Foundation Matching
Gifts Program
Linda Reich
Barbara & Gerun Riley
Ellen Rosand
Peter Russo
Nancy Ruther
Meghan & Sean Scanlon
Joan & Ralph Schoemann
Amy & Stephen Shelton
Robert Stanko
Elsa Stone & Steven Wolfson
James Sullivan
Susan & Peter Tattersall
Patricia Turner & Thomas Jensen
Garth Varian
Ulrika & John Wettlaufer
Katherine Wiltshire & Chris Jones





\$100 TO \$249

Barbara & Roger Adams
 Anne & George Aghajanian
 Jennifer Alexander
 Sarah & Cameron Alexander
 Allison Alkire & Roslyn Rubinstein
 Nancy Armstrong
 Robert Attaran
 Rosemary & David Baggish
 Virginia & Charles Baltay
 Mary & Roger Barnes
 Sondra Baseggio
 Laura & Paul Bauer
 Joanna Baymiller
 Jacqueline Becker
 Patricia & Lawrence Bee
 Mary Beeman
 Maureen & Michael Belden
 Kathleen & Edward Bennett
 Nona & Kent Bloomer
 Mandy & James Bonz
 Edward & Lynne Bradstreet
 Meikel Brewster
 Kathleen & Alan Brooks
 Rula & Peter Burrow
 Jeffrey Burt
 Nancy & Robert Cairns
 Cindy & George Caligan
 Georgeanne Campaigne
 Helen & David Carlson
 Celia & William Carroll
 Annie Ceccarini
 Julia Chaffe & Aric Isaacs
 Caroline Chandler
 Robin & Robert Charney
 Katherine Churchill
 Grace Cipriano
 Shannon Clarkson

Arlene Cohen
 Christine & Howard Cohen
 Patricia & Peter Colburn
 Maureen Corcoran & Zeno Chicarilli
 Jackie & Tom Cost
 Dennis Culliton
 Jim Cunneen
 Kristen D'Souza
 Elizabeth Dahill
 Kathleen & Everett Dallacosta
 Patricia DeChiara & James Goodridge
 Bonnie & James DeLucia
 Gail & Frank Direinzo
 Joann, David & Angelina Ditta
 Susan & John Ditta
 Jacqueline & Millard Dorwin
 Marilyn & Craig Douglas
 Diana Draper
 Raymond Dudley
 Cynthia Dwyer
 Susan & Barry Egan
 Peggy & John Elefteriades
 Jana Eliseo
 Gail Etter
 Timothy Faitsch
 Tara Fappiano
 Bonnie & Wesley Fastiff
 Amy Fenollosa
 Richard Ferguson
 Roberta & John Flannery
 Sandra Flatow
 Gwen Fletcher & Dorothy Volosin
 Jo-Ellen & Terrance Ford
 Martha & Alfred Fordiani
 Richard Forest & Valerie Kilmartin
 Marie Fourteau
 Frank's Package Store
 Betsy Frederick
 Judith & Raymond Freed
 Eleanor Frohlich
 Sandra Gardinier
 Sarah & Sam Gerritz
 Elizabeth Getrost
 Linda & Vincent Giordano
 Shirley Girioni
 Sandy & Eric Glover
 Anne & Jeffrey Godsey
 Karen & Phil Goldberg
 Dana Grajauskas
 Judith Greif

LornaGrace Grenfell
 Karen Grimmell & William Joughin
 Martha & Frederick Haeseler
 Lorri Hahn
 Judy & Peter Haley
 Peter Halley
 Philip Hamilton
 Jane & Thomas Hanson
 Lee & Robert Harrison
 Eleanor & Robert Hartmann
 Ruth & Jim Heckman
 Elise Hergan
 Elaine & Peter Hess
 Tom Hirsch
 Margaret Homans
 Amy Hopkins
 Lynn & Kenneth Horton
 Yvette & Richard Howard
 Michaele Imbrogno
 Jane Kammerer
 Shanta & Cyrus Kapadia
 Kristi & Francis Keil
 James Kenefick
 Barbara Kiesel
 Patricia Klindienst
 Karen Klugman
 Pam & Gary Knowles
 John Kozub
 Maryann & Richard Lalumiere
 Melodie Lane O'Connor
 Mary Anne Lavin
 Mary Alice Lee
 Tracey LeMay
 Rusne & Jonas Lieponis
 Carol & Ralph Linsley
 Wanda & Horace Little
 Gladly & Gilbert Lombard
 Seamus Lonergan
 Carol Lovell
 Elizabeth & Watson Lowery
 Lindalea Ludwick
 Marilyn & Richard Lynch
 Monica & William Lynders
 Jennifer Mandel
 Sandra & Kenneth Mango
 Christine Manuck
 Marybeth Marx
 Maureen Massa
 Wayne & Phyllis Maw
 Karen Mayhew



WE ARE HONORED to be entrusted, for the second year in a row, with the responsibility of distributing all of the Guilford Savings Bank's philanthropic investments in Guilford. **Thank you, Guilford Savings Bank,** for your confidence in us!

Erin & John McCallum
 Paula & Gregory McCarthy
 Jamie & Tom McCauley
 Janet & Charlie McClure
 Meghan McGuire
 Renee & Bruce McIntyre
 Joan & Thomas McNeil
 Michael & Tobie Meisel
 Irene Millet
 Mary Jane Minkin & Steven Pincus
 Richard Misenti
 Beth & David Moffat
 Linda Moleski
 Maura Mongelli
 Shana Moore
 Jennifer & Craig Mullett
 Joanne & Ronald Nault
 Linda Nickerson
 Estelle & Paul Nussbaum
 Catherine & James O'Keefe
 Margaret & Don Opatrny
 H. Logan Page
 Gail & Michael Pappas
 Brigitte Peucker & Paul Fry
 Joan & Erik Pingoud
 Janice & Steven Plaziak
 Clifford Poole
 Guilford Professional Firefighters
 Barbara & Tom Puffer
 Karen & Richard Quercia
 Penelope & Peter Rebuzzini
 Matthew Renola
 Barbara & Roger Richard
 Elizabeth & Stanton Robison
 Lisa & Michael Rogers
 Michele & William Rosa
 Nina & John Rose
 Harriet & Ken Rosen
 Elizabeth & Richard Rubin
 Ornella Rullo
 Sandra Ruoff

Patricia Ruser
 Meg Rydell & Harry Aslanian
 Emelinda & Gerard Sanacora
 Amy Schiess
 Hilke & Werner Schirmer
 Karen Scialabba
 Laurie & Stephen Scialabba
 Jen & Manish Shanbhag
 Sheela Sheno
 Steven Shimada
 Pat Sholly
 Sarah Shrewsbury
 Rachel Skranski
 Stacey & Cutter Smith
 Heidi & Leigh Smith
 Gail & Roy Smith
 Laura Smith
 J. Philip Smyth
 Stephanie Spangler & Robert Shulman
 Lisa & Jerome Speltz
 Serena Spudich
 Beverlee Stabile
 Ann Street & Ted Zuse
 Melissa & Timothy Sullivan
 Jeanne Thomsen
 Lynne Tirrell & Timothy Sperry
 Linda & Lee Titus
 Lisa Travis
 Darcy Turner
 Katie Tuttle & Bill Mulligan
 Howard Tuttle
 United Way of Greater New Haven
 MaryAnn & Anthony Valentino
 Marianne & Robert Valley
 Nancy & David Valley
 Christina Van Itallie &
 James Anderson
 Mary Von Herrmann &
 David Funkhouser
 Mary & Walter Wakeman
 Wendy & Rex Walden

Alma & Russell Waldo
 Nancy Wardell
 Cheryl & Jeffrey Weisberg
 Sandy & Richard Whelan
 Sarah Widlitz
 Anne Marie Wienkamp
 Pamela & Buck Wilson
 Branford Winnelson Co.
 Robin & Andrew Wolek
 Alyson & Jeff Zeitlin

UP TO \$100
 Anonymous
 Heather Allore
 Linda & Gary Altieri
 Linda & Stephen Amarante
 Amazon Smile Foundation
 Joan Ames
 Donita & James Anderson-Osga
 Joan & Ernest Anthonis
 Sylvia & Laurence Appleton
 Irene Auerbach & Philip Schaeffer
 Linda & Michael Balzano
 Susan Baserga
 Shannon & Aaron Bernard
 Thomas Black
 Blackbaud Giving Fund
 Lauren & Joseph Blaha
 Holly & John Bollier
 Clara Bowron
 Gloria & Robert Bradley
 Ann Bradley
 Elizabeth Brause
 Janet Brissette & Albert Kraus
 Martha Buck
 H. Benjamin Bullard
 Deborah & James Busmann
 Tracy Calafiore
 Carolyn & Edward Calhoun
 Marissa & Giuseppe Capasso
 Martin Carbone



Donna Castracane
 Isis Cejas
 Evelyn & Roger Celesk
 Holley Claiborn
 Penelope & Ira Colby
 Nancy & Scott Conover
 Janet & Thomas Conroy
 Barbara Coppola
 Judy Cutuli
 Nancy Czarkowski
 Cynthia & David Damer
 Moira DeCesare
 Andrea Dickey
 Daniel Dorwin
 Lois Dudley
 Linda Duncan
 Anna Dwyer
 Amy & Matt Earls
 Eaton Company
 Ellen & Michael Ebert
 Ellen Edens
 John Eismeier
 Ann & Red Erda
 Robert Feinn
 Margaret Flesher
 Ron Forte
 Connie Frontis & Neil Brockwehl
 Melissa Anne Garuti
 Melissa & Peter Ginz
 Mitch Goldblatt
 Louise & Henry Graver

June-Ann Greeley
 Ellie Green
 Laurel Griso
 Heather Hackley
 Meghan & David Hadley
 Cheryl & Will Hagner
 Cynthia Hasty
 Suellen Heinrich
 Joel Helander
 Paula Hermey
 Matt Hoey
 Roxanne & Milton Ignatius
 Marcia & Robert Jacoby
 Kaaren Janssen
 Amy Jensen
 Clare & James Keefe
 Lauren Knight
 Judith & Vaughn Knowles
 Maryann & Donald Kowalsky
 Ann & Dennis Krajewski
 Laurie & Steven Kramer
 Leslie & Harlan Krumholz
 B Kaye Larson
 Linda & KJ Lee
 Richard Lewis
 Teri & Bruce Linkov
 Ninette & Philip Long
 Martha & Terry Maguire
 Peggy Maier & Joseph Dagrosa
 Catherine Marganski
 Mary & Guy Marszalek
 Michele Martin
 Thomas Masse & James Perlotto
 Theresa & Rick Maynard
 Sue & Brian McGlone
 Sandra & Michael McKinnon
 Maureen McNally
 Carolyn McNally
 Carolyn Milazzo & Stephen Murphy
 Carol & Charles Moakley
 Maggie Moffett
 Pamela & Vincent Morgan
 Debra & John Muro
 Joanna & Lawrence Noble
 Arlene & David Norling
 Elizabeth & David Nowak
 Joe Nugent
 Mary Lou & Tom O'Keefe
 Gail & Eugene O'Leary
 Robert Oppel

Pamela Orton
 Ellen & Louis Paffumi
 Toni & Peter Page
 Abby Patrizio
 Inge Lise Puzano
 Camille & Albert Perry
 Maria & Brian Phelps
 Carolyn & Russell Pierson
 Helen & Richard Pignone
 Maryann Pillartz
 Stephanie Quarato
 Barbara Ranciato
 Alayne Reed
 Mary & Ron Repetti
 Roseanne & Kenneth Ross
 Lori Ruser
 Patricia & Peter Russell
 Barbara Russo
 Barbara Ryden
 Janet & Richard Sandella
 Paul Sanders
 Kerry Sawyer Schutz
 Doris & Robert Schaper
 Theresa & Philip Sciarra
 Sheri Scully & Jon Rubin
 Winifred & Edward Seibert
 Sheila Shay
 Patricia & Mark Shoemaker
 Susan Shulman
 Tina Silidker
 Patti & Barry Sinoway
 Alfonzo Sirica
 Judith & Mark Sklarz
 Judith & Flannigan Smith
 Carolyne Soper
 Holly Starkman Smith
 Christy Stoddard
 Patricia & Matthias Strilbyckij
 Nancy & Paul Sullivan
 William Summa
 Kathleen & David Summerlin
 Frances Swietlicki
 Alina Switaj
 Stephanie Tafro
 Eleanor Tandler
 Amelia Tarantino
 Sharon & Keith Thompson
 Sharon Triano-Kott
 Margaret Tringali
 Courtney Trotta

Jennifer & Andrew Tucci
 Roger Tucker
 Linda & Alfred Vigorito
 Stuart Weinzimer
 Eleanor & Joseph Weissberg
 Dinah Wells
 Elizabeth & Derek Wessman
 Sheila Whitman
 Suzanne Ziegenhagen
 Josefa & Alan Zimmerman

2020 COVID-19 RESPONSE FUND

Deborah Abildsoe & Irving Schloss
 Barbara & Roger Adams
 Heather Allore
 Barbara & Chip Angle
 Nancy Armstrong
 Jodi & Todd Arnold
 Rosemary & David Baggish
 Carol Bailey & Laurie Desmet
 Linda Balestracci
 Alexander Banker
 Paula Baraket & Nancy Ruther
 Sondra Baseggio
 Joanna Baymiller
 Jacqueline Becker
 Maureen & Michael Belden
 Karen Bentlage
 Karen & Terry Bergantino
 Shannon & Aaron Bernard
 Debbie & Keith Bishop
 Bishop's Orchards
 Clara Bowron
 Maryann & Michael Bracken
 Elizabeth Brause
 Fred Brisbois
 Tracy Calafiore
 Marissa & Giuseppe Capasso
 Linda Carr
 Joann & Richard Carson
 Donna Castracane
 Isis Cejas
 Robin & Robert Charney
 Katherine Churchill
 Grace Cipriano
 Holley Claiborn
 Arlene Cohen
 Maggie Cohn
 Community Foundation for
 Greater New Haven

Ruth Cook
 Barbara Coppola
 Maureen Corcoran & Zeno Chicarilli
 Ellen Cordes & Harry Haskell
 Jen & John Cruet
 Dennis Culliton
 Jim Cunneen
 Judy Cutuli
 Shan & Ronald Cyr
 Judy & Richard Davies
 Helene & Michael DeCataldo
 Moira DeCesare
 Connie & Peter Dickinson
 John Dillon
 Jacqueline & Millard Dorwin
 Marilyn & Craig Douglas
 Christine & Louis Drago
 Diana Draper
 Ellen Edens
 Eileen & Andrew Eder
 Yvette & Arthur Eder
 Kristen & Johan Eveland
 Christine & Anthony Fappiano
 Ann & Daniel Fisher
 Roberta & John Flannery
 Sandra Flatow
 Margaret Flesher
 Dorothea Flink
 Ron Forte
 Marie Fourteau
 Betsy Frederick
 Eleanor Frohlich
 B. Christopher Galvin
 Melissa Anne Garuti
 Caitlin Garzi
 Melissa & Timothy Geelan
 Simone & Brian Gell
 Sarah & Sam Gerritz
 Elizabeth Getrost



John Gillespie
 Melissa & Peter Ginz
 June-Ann Greeley
 Ellie Green
 Jane & Stephen Gresham
 Betsy Gribble & Doug Baldwin
 Laurel Griso
 Guilford Savings Bank
 Elizabeth Hadley
 Martha & Frederick Haeseler
 Lorri Hahn
 Jane & Thomas Hanson
 Cynthia Hasty
 Elise Hergan
 Paul Hermes
 Paula Hermey
 Caroline Herrick & Theodore Sands
 Amy Hopkins
 Lynne Hyman & Caird Forbes-Cockell
 Merri & John Hyman
 James Ian
 Michaele Imbrogno
 Kaaren Janssen
 Jane Kammerer
 Kristi & Francis Keil
 Suzanne Kelley
 Jerry Kenney
 Mary Jo Kestner & Russ Campaigne
 Patricia Klindienst
 Karen Klugman
 Lauren Knight
 Laurie & Steven Kramer
 Maria Krisch
 Melissa & Steven Lamoreaux
 Mary Alice Lee
 Linda & KJ Lee
 Marie & Leighton Lee
 Kate & William Lee
 Tracey LeMay
 Susan & Tony Leonard
 Teri & Bruce Linkov
 Wanda & Horace Little
 Lindalea Ludwick
 Delaney & W. Bruce Lundberg
 Laretta Lyons
 Martha & Terry Maguire
 Elizabeth & James Mancini
 Jennifer Mandel
 Christine Manuck
 Catherine Marganski

Marybeth Marx
 Maureen Massa
 Carolyn Matthes
 Wayne & Phyllis Maw
 Paula & Gregory McCarthy
 Sue & Brian McGlone
 Renee & Bruce McIntyre
 Cindy & Robert McNamara
 Jennifer & Michael McNiff
 Juliette McSweet
 Patty Ann & Ed Meyer
 James Meyer
 Roslyn Meyer
 Judith Meyers & Richard Hersh
 Elisa & David Milano
 Pam & Doug Miller
 Irene Millet
 Michele Millham
 Maggie Moffett
 Maura Mongelli
 Shana Moore
 Jennifer & Craig Mullett
 Debra & John Muro
 Sandy Nicholas
 Linda Nickerson
 Estelle & Paul Nussbaum
 Louise & Rick Odermatt
 Don & Margaret Opatrny
 Peter & Bobbe Otis
 Melissa & Andrew Page
 Renee Pallenberg
 Julie Paquette & Derek Steinbacher
 Abby Patrizio
 Liza Janssen Petra & Noel Petra
 Diane & Guido Petra
 Brigitte Peucker & Paul Fry
 Helen & Richard Pignone
 Clifford Poole
 Leslie Powell
 Barbara & Tom Puffer
 Joellen Putnam
 Stephanie Quarato
 Karen & Richard Quercia
 Barbara Ranciato
 Linda Reich
 Joan & Barry Richter
 Barbara & Gerun Riley
 Lisa & Michael Rogers
 Bonnie & Jonathan Rothberg
 Ornella Rullo
 Lisa & Donald Rusconi



Barbara Ryden
 Paul Sanders
 Kerry Sawyer Schutz
 Amy Schiess
 Hilke & Werner Schirmer
 Joan & Ralph Schoemann
 Larry Schwartz
 Sheri Scully & Jon Rubin
 Jen & Manish Shanbhag
 Sheila Shay
 Amy & Stephen Shelton
 Sheela Shenoj
 Steven Shimada
 Sarah Shrewsbury
 Joan Shrewsbury
 Susan Shulman
 Andrea & Mark Sklar
 Rachel Skranski
 Heidi & Leigh Smith
 Stacey & Cutter Smith
 Laura Smith
 J. Philip Smyth
 Veronica Soell
 Carlyne Soper
 Sandra & Parry Spahr
 Lisa & Jerome Speltz
 Serena Spudich
 Holly Starkman Smith
 Amy Stefanowski
 Mary Stevens & Jock Akin
 Christy Stoddard
 Pamela & Sandy Stoddard
 Melissa & Timothy Sullivan
 Alina Switaj
 Stephanie Tafro
 Eleanor Tandler

Sharon & Keith Thompson
 Jeanne Thomsen
 Lynne Tirrell & Timothy Sperry
 Sharon Triano-Kott
 Courtney Trotta
 Darcy Turner
 Patricia Turner & Thomas Jensen
 Katie Tuttle & Bill Mulligan
 Christina Van Itallie & James
 Anderson
 Linda & Alfred Vigorito
 Peter Visco
 Mary Von Herrmann &
 David Funkhouser
 Mary & Walter Wakeman
 Wendy & Rex Walden
 Cierra Waller
 Nancy Wardell
 Linda & Jeffrey Weber
 Eleanor & Joseph Weissberg
 Kathleen White
 Sheila Whitman
 Sarah Widlitz
 Anne Marie Wienkamp
 Robin & Andrew Wolek
 Suzanne Ziegenhagen



We worked carefully to ensure the completeness and accuracy of this list. We apologize for any mistakes, and ask that you contact Liza Janssen Petra at (203) 640-4049 or lpetra@guilfordfoundation.org to correct any inconsistencies.



We still don't know exactly what things will look like, post-pandemic. But I'm confident the future will be bright because Guilford has people like you — ready and waiting to step forward to help whenever your neighbors need you.

LIZA JANSSEN PETRA, EXECUTIVE DIRECTOR

Thank you
for your compassion and generosity

